

Metal Wall & Soffit Systems

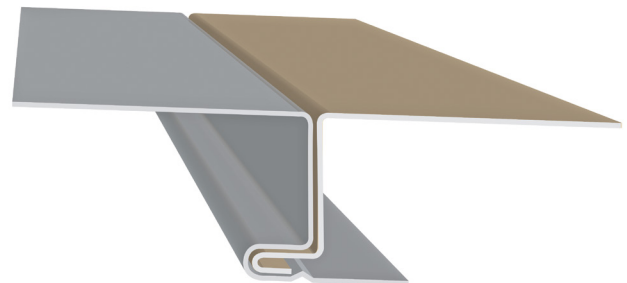
SMI 1.5" FWP with HEM Flush Wall & Soffit Panel

Panel Information:

Panel Type:	Wall / Soffit
Seam Height:	1.5"
Panel Material:	22 GA - 24 GA Min
Panel Surface:	Smooth / Embossed Optional

Panel Notes:

- This panel uses a 17" coil, which produces a 12" panel.
- This panel uses 5" of material to form the panel.
- If you use a 20" coil, you take the square footage of the wall and multiply that by 1.416, the total will be the amount coil needed to manufacture the panels.
- Minimum panel width is 12".



SMI 1.5" FWP with HEM

